

Swallowfield Equestrian Club

In this Issue:

- ✘ [Further Developments](#)
- ✘ [Environmental considerations](#)
- ✘ [Centaur League](#)
- ✘ [Cornerhouse Equine Clinic - STROPPY MARE ????](#)
- ✘ [Astwood Update](#)
- ✘ [Loyalty Cards](#)
- ✘ [Club League Results](#)
- ✘ [Congratulations to qualifiers](#)



Sorry, it's been a while

Our sincere apologies for the lack of newsletter since February. In the last few weeks we have been suitably reprimanded, some feeble excuses include:

- 1) The extended winter weather led to a number of our shows and events being cancelled, as well as those from other venues, and our club news was limited.
- 2) As you all know, we were working hard towards our Easter Sunday BE event. Only one week before the event, our cross country ground was "perfect", we had over 100 entries and we were good to go. Then, unbelievably, after all that effort, we were beaten at the eleventh hour by the weather and we had to abandon the event.

To all of our club members who offered us event sponsorship, your time during the build up, organizational skills and volunteered yourselves (and friends and family) for the day, a HUGE heart felt thank you. We are still hoping for a revised date in the BE calendar for later this year and we are confident of a 2011 Lapworth BE Event. If all goes according to plan, we will be calling on you again!

- 3) The SEC club secretary took a longer than normal holiday!

Further Developments

The effort that went into The Easter Sunday BE Event has not been wasted. Frequent visitors will notice "some" changes around our outdoor arena that not only look smarter, but should also assist the smooth running of our competitions.

We have redeveloped the old stable block at the car park end of the outdoor arena. This now houses a new indoor "club house", a secretary's office and a covered seating area – that can extend into the open air when the sun shines.

From now on, all score sheets will be posted in the new club house - being close to the lorry/car park, this should be more convenient for competitors – and the proximity of the new secretary's office to the warm up arena needs no explanation!

The viewing gallery has moved to the far end of the indoor arena, freeing up the smaller sliding doors to the indoor arena that were previously inaccessible. Opposite these doors, a new gate directly accesses the outdoor arena. Moving to/from the warm-up arena is now more streamlined and while the changes do not overly affect our dressage competitors, the feedback from our show jumping competitors has been extremely favourable. As previously announced, we are now affiliated to the BSJA and the changes will enable us to more easily interchange the two arenas for SJ shows depending on the seasons, and adverse weather conditions.

The new club house is warm, casual and Wi-Fi connected and can accommodate more than 30 people comfortably. **Since its conversion, we have used the new room to host a number of Swallowfield events and we are now able to offer it for hire to outside parties looking for a local meeting venue, both equestrian and non-equestrian.**

We are delighted to welcome The Butcher's Grill as our new event caterers. They are located in front of our new club house, so if it's raining you can quickly run for cover! The Butcher's Grill are specialist outdoor event caterers and offer a diverse menu, ranging from specialty coffees and home made cakes to more traditional event fare. At Swallowfield, we sought a catering partner who reflected our own values. The Butcher's Grill use only high quality ingredients, where possible from local producers, and use eco-friendly Vegware packaging. We have received excellent feedback from their first few shows with us and we/they welcome further comments and suggestions. Their dates with us are listed on their website www.thebutchersgrill.co.uk

Environmental considerations

We are all aware that minor changes in our individual behaviour can have a collective benefit to our environment. As an example, as a working livery yard we have converted from traditional shavings to wood pellets for bedding. Whilst being equally comfortable and effective for our horses, they are not only a by-product of the existing timber industry, they are also dust suppressing and compost easily, and they are more economical.

Everyone who competes knows how many schedules are printed weekly, monthly and yearly. Many are posted on windscreens in lorry parks, posted in huge numbers as mailshots or left in piles on open air tables and a very large proportion of them end up in the bin. If the wasted paper was re-cycled it wouldn't be too bad, but most of the time it ends up as normal rubbish.

We are currently considering all aspects of our operation and trying to minimise our environmental impact and even though we re-cycle/minimise paper usage, we are conscious of the reams we use for schedules, especially as, like any competition centre, our schedules are subject to change and events are regularly included by equestrian specialists. As these changes cannot be reflected in previously printed material, these schedules have a short shelf life and generally end up in the bin. It is our intention to phase out printed schedules as soon as possible.

To keep your diary up to date and to reduce the amount of unnecessary waste, please make a habit of regularly visiting <http://www.swallowfield.net> and checking our on-line schedules.



Centaur Biomechanics summer club league

Centaur Biomechanics continue to be one of our major sponsors. They were destined to sponsor one of the arenas for our BE Event and are sponsoring our summer club league that started on 1st February and will run until 31st July. As with Astwood Osteopaths for the winter season, they will be providing the winner's prize.

The extended winter put a damper on the first months of the new league, with a number of competitions being cancelled. The schedule is now back on course and club members are back with us and achieving good results.

Somewhat belatedly, we can confirm that Irene Warren with Bally's Dream were the winners of the previous season with 72 points. A great score and congratulations to Irene.

Following a few questions, to clarify the rules, the new season means everyone starts at "0" again and points are awarded to horse/rider combinations. Points are awarded from 1st – 6th place irrespective of the discipline or level of the competition.

Centaur continue to impact on the world of dressage and are highly regarded in the British Dressage arena. They are the sponsors of the BD Prelims at the 2010 Summer Nationals and are now heavily involved in BYRDS.

If you want to improve your riding or ensure that your horse stays sound or improve your horses movement/performance? Centaur can help.

Centaur Biomechanics, founded by Russell Guire, is a company which specialises in horse and rider performance analysis. Serving the equine industry, Centaur Biomechanics utilises the latest software and techniques available to help improve performance and maintain soundness of both the horse and rider.

Centaur Biomechanics are scheduled to run monthly events here during the coming year. Please contact Centaur via their website <http://www.centaurbiomechanics.co.uk> for the schedule and bookings.



Cornerhouse have launched a new **free visit scheme** for routine veterinary work.

They will assign a vet to your zone for routine work i.e. vaccines, dental work, revisits, prescriptions checks, blood tests, removal of stitches post surgery etc.

The visit can be booked weeks in advance, the latest time being 2pm the day before the zone visit day. The appointment time is allocated after 4pm the day before your visit and you will need to phone the clinic between 4pm and 5pm to confirm your appointment time. **To qualify for the free zone visit, payment for all work carried out must be made at the time of the visit.**

Please see their web site for free visit zone information.

We are extremely fortunate to have such equine specialists within our geographical area and over the years we have kept them quite busy!

Robert Walsh and his team will regularly submit articles for our newsletter. These papers will address issues we all face, whether we like it or not!

If you would like any further information on Cornerhouse Equine Clinic services please call them on 01564 743033, via their web site www.cornerhousevets.com or email them at info@cornerhousevets.com

Cornerhouse Equine Clinic - STROPPIY MARE ????

Once every 21 days, life becomes hell for many horse owners, particularly during the spring and summer months. During this period, mares come into season once every three weeks – for the lucky mares/owners, there may be no adverse or extreme side effects, but for the unlucky ones, it can leave the mare unrideable and the owner at the end of his/her tether.

For the majority of mares, ovaries are perfectly normal in appearance and are merely 'doing their job', however in rare cases an overactive ovary can lead to stallion like behaviour, including aggression, and can, in extreme circumstances, develop into a tumour-like mass up to the size of a football.

The mares behaviour can become stroppiy, unpredictable, and in some cases plain dangerous.

At Cornerhouse, we are often asked to inject a double dose of human contraceptives which seems to subdue this behaviour. Another drug that has been used for years is "REGUMATE" again a hormone based drug which works well to dampen down the mare-ish behaviour. Alternatively there are a variety of supplements that are available on the market which may/may not have a beneficial effect, depending on the cause and level of the mare's discomfort. In cases where non-intrusive treatment is ineffective we will scan the ovaries, and if there are clear abnormalities, we may progress to discussing surgery.

During the last year we have had two cases in which the owners deemed the undesirable side effects of being in season so severe that they decided to have the ovaries removed by laparoscopy. This is a standing surgery done using a small camera inserted into the abdomen via incisions in the left and right hand side. Mares with no ovaries no longer come into season and although they still have a uterus they are effectively sterile.

The following pictures are not for the faint hearted, but show the operation being done in stages.



Local anaesthetic is injected into the left and right flanks, the mare is lightly sedated and standing in stocks.

Both flanks are scrubbed thoroughly.

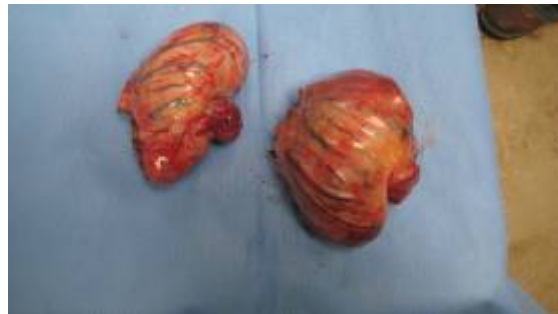


Two incisions are made, one for the camera (laparoscope) and one for the instruments.

An assistant helps guide the camera and cutting tools ,while the vet watches the picture on the screen (below)



Once the ovary has been severed from its blood supply it can safely be removed through the incision.



The right ovary is removed in the same way ,here we see both ovaries after removal, the whole operation takes 2 hours and the mares generally make an uneventful recovery.

For more details on this operation , or treatments that can help with seasonal problems please phone the clinic on 01564 743033

Astwood Update



Since they opened, Astwood have held a number of open days at their own livery yard, focussing on developing and maintaining straightness between horse and rider and enhancing rider techniques.

Their events have been hugely successful and oversubscribed, so keep an eye on their web site for upcoming dates and book in early to avoid disappointment.

Andrew is a regular visitor to Swallowfield and we all benefit from his expertise, both horses and riders.

If Swallowfield is geographically convenient, and you feel that you or your horse would benefit from treatment or a straightness assessment, please contact us and, schedules permitting, we will add you to Andrew's patient list.

However, please be aware that, as with all osteopathy consultations, post treatment recommendations may apply, limiting immediate exercise or physical stress.

For further details and future timetables, visit the Astwood web site

www.astwoodequineosteopaths.co.uk

Swallowfield Loyalty Card

Just a friendly nudge - as you know, at Swallowfield we run a lot of shows and finding helpers is an ongoing challenge for Lucy as the show secretary.

Our loyalty card scheme is designed to reward those who help us run our competitions.

Surprisingly, one of our main challenges is finding writers for dressage. Those of you who have written for dressage judges know how beneficial it can be. It helps you understand what a judge is looking for in a test, why some marks are higher, and others lower than you expected and some specifics you can incorporate into your own riding to improve your marks.

In addition to the competitive benefits of writing for dressage judges, we also have our Swallowfield Loyalty Card.

All members and helpers should have a loyalty card, if you have not received one (or you have lost it), please see Lucy for a replacement.

In its simplest form, for every hour you help us, we will stamp your card. When you have 5 hours, we will give you a free £10 voucher to spend at Swallowfield towards entries or lessons. If you are competing in a class, it would be fabulous if you could help us earlier or later in the day.

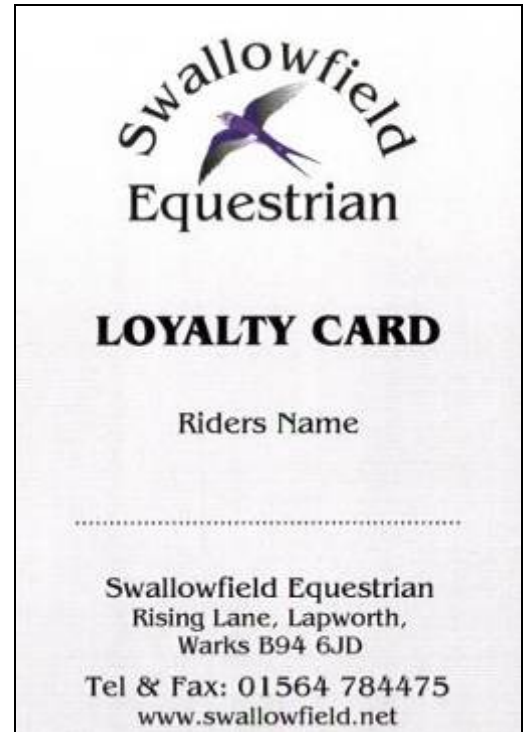
Don't forget our one day events and show jumping competitions. These also need helpers as stewards, fence judges and arena party.

Make sure you get your Loyalty Card from the office and earn loyalty points in return.

Check our schedule online at www.swallowfield.net and either contact Lucy in the main office or email club@swallowfield.net with the dates you could help us.

Club Stickers

After several mis-communications with printing companies, Swallowfield club stickers are available from the office. Contrary to the initial few production runs, they are designed to be self adhesive to the inside of your windscreen with the motif facing outwards!



Club League Results

Congratulations to our Club members who have achieved the following results in our recent competitions and have therefore earned points towards the Club League.

We would like to thank Centaur Biomechanics for their generous sponsorship of our season league and the donation of the winning prizes.

Don't forget to quote your SEC membership number when sending in your entries to benefit from our exclusive SEC member discounts

Date	Comp	Horse/Rider	Place	Points
14/02/2010	BD P13	Sue Lee – Daisynski	3 rd	5
28/02/10	TB P12	Sue Lee – Daisynski	6 th	1
14/03/10	BD P15	Sue Lee – Daisynski	1 st	10
14/03/10	BD P15	Sue Lee – Daisynski	1 st	10
14/03/10	BD P19	Sue Lee – Daisynski	2 nd	7
14/03/10	BD N22	Felicity Ho – Go Donny Ho	1 st	10
14/03/10	BD N22	Kelly Grimm – Naxos de la Lande	2 nd	7
14/03/10	BD N37	Felicity Ho – Go Donny Ho	1 st	10
14/03/10	BD N37	Kelly Grimm – Naxos de la Lande	3 rd	5
25/03/10	BD E49	Emma Beswick – Dulverton Jungle	1 st	10
25/03/10	BD E50	Emma Beswick – Dulverton Jungle	1 st	10
15/05/10	TB 2 nd rd nov sen	Sue Lee – Daisynski	4 th	3
15/05/10	TB 2 nd rd nov jun	Eve Croghan - Montana	1 st	10
15/05/10	TB 2 nd rd nov jun	Millie Logan – Ella	6 th	1
15/05/10	TB 2 nd rd elem jun	Millie Logan – Ella	1 st	10
27/05/10	BD P 15	Sue Lee – Daisynski	1 st	10
27/05/10	BD P 19	Sue Lee – Daisynski	1 st	10
27/05/10	BD N 22	Felicity Ho – Go Donny Ho	2 nd	7
27/05/10	BD N 38	Felicity Ho – Go Donny Ho	4 th	3
May	TB SJ 2.6	Georgie Oxnard – Pumpkin	2 nd	7
May	TB SJ 2.9	Georgie Oxnard – Pumpkin	1 st	10

Current Leaderboard

Horse/Rider	Pts
Sue Lee – Daisynski	46
Felicity Ho – Go Donny Ho	30
Emma Beswick – Dulverton Jungle	20
Georgie Oxnard – Pumpkin	17
Kelly Grimm – Naxos de la Lande	12
Millie Logan – Ella ueen	11

Points Awarded

Place	Pts
1 st	10
2 nd	7
3 rd	5
4 th	3
5 th	2
6 th	1

Points are awarded for a horse and rider combination and are not dependant on level of competition.

We have noticed that a number of rider/horse combinations, regularly placed in competitions, have not joined our Swallowfield Riding Club. We try to maintain the club profile, but you, as SEC club members and regular visitors can also play your part. You know that reduced entry fees can soon add up, (on top of other club “specials”). If you introduce a new member to SEC, you will receive a £5 discount from your 2010/11 membership renewal

Congratulations to qualifiers

At Swallowfield we know that our competitions invite some of the strongest competitors in the region and we are always delighted to see the winners of our qualifying competitions progress to the subsequent rounds.

We are even more excited when the qualifiers are club members or members of staff, so **CONGRATULATIONS** to:

- ✦ our current league leaders, Sue Lee and Daisynski, who have qualified for the Preliminary Regionals, as well as having a really successful time at the central inter regionals.



- ✦ The Swallowfield team, with Jo as team trainer, who had a came 10th out of 40 teams at the central inter regionals



- ✦ Lucy Owen our “needs no introduction” Swallowfield general manager and show secretary has qualified for the BD Novice Open Regionals on her horse Abydos II
- ✦ Long standing member of staff Katie Attenborrow has qualified for the Novice Restricted BD Regionals, on her horse Ramses G.

Please let us know if you have qualified for any regional or national competitions, we would love to tell our other members.